

RK-10
SERVICE MANUAL - 1

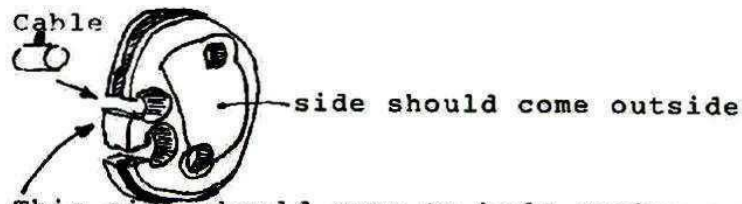
TO REPLACE CABLES OF REMOTE CONTROL FOOT PEDAL

DISASSEMBLE CABLES IN THE FOLLOWING PROCEDURES;

1. Unscrew the phillip screw on the roller covers of pedal and the body casing to remove the roller covers.
2. Unscrew the phillip screw and remove pipe strip.
3. Loosen 4 locknut on cables.
4. Unscrew 4-Allen bolts(M6 X 12) on roller-A & B remove roller-A & B.
5. Loosen 4 adjust bolts on cables and remove.

REASSEMBLE CABLES IN THE FOLLOWING PROCEDURES;

1. Set new rollers A & B into the position.



2. Screw the 4 adjust bolts into the tensioner.
3. Fasten roller A onto the body casing and roller B onto the pedal with 2 each Allen bolts(M6 X 12).
4. Tighten cables by screwing out the adjust bolts on cables and keep moderate tension of both cables, and set the locknut.

Turn on the switch of potter's wheel and adjust the stopper bolt (zero rpm adjust)in or out the stopper bolt until the wheelhead stops at zero position of the foot pedal.

Do adjust Adjust bolts on cables only when the tension of cables should be adjusted. Do not adjust cables to get zero stop of wheelhead.

Do not adjust tension or zero rpm when cables are kinked or bent too sharply.

5. Tighten the Pipe Strip and Roller covers.
CAUTION: Cable must crossed. (Upper cable comes to lower from body to pedal.) See photo and make sure.

Tools needed;

- *Phillip Screw Driver
- *Open-end Wrench 7-10 mm
- *Allen wrench 5 mm

In case of 2, and 4,

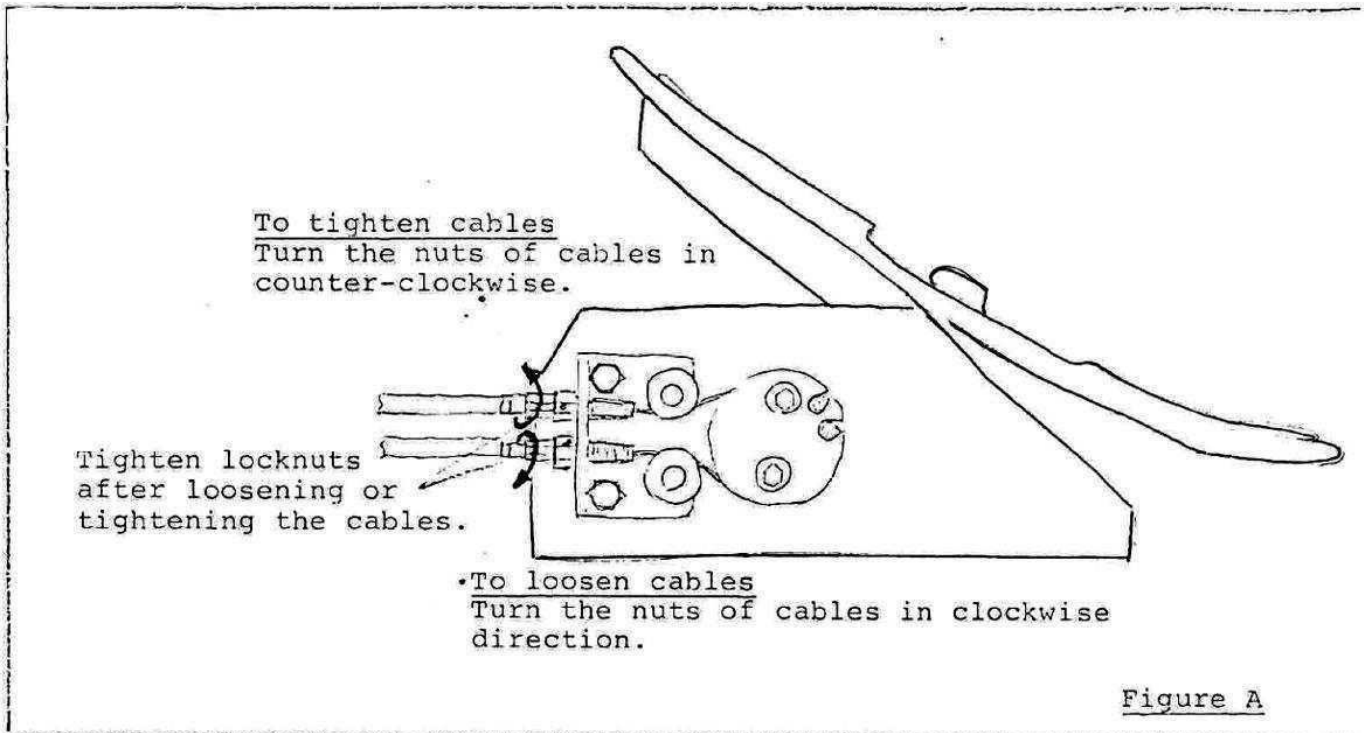
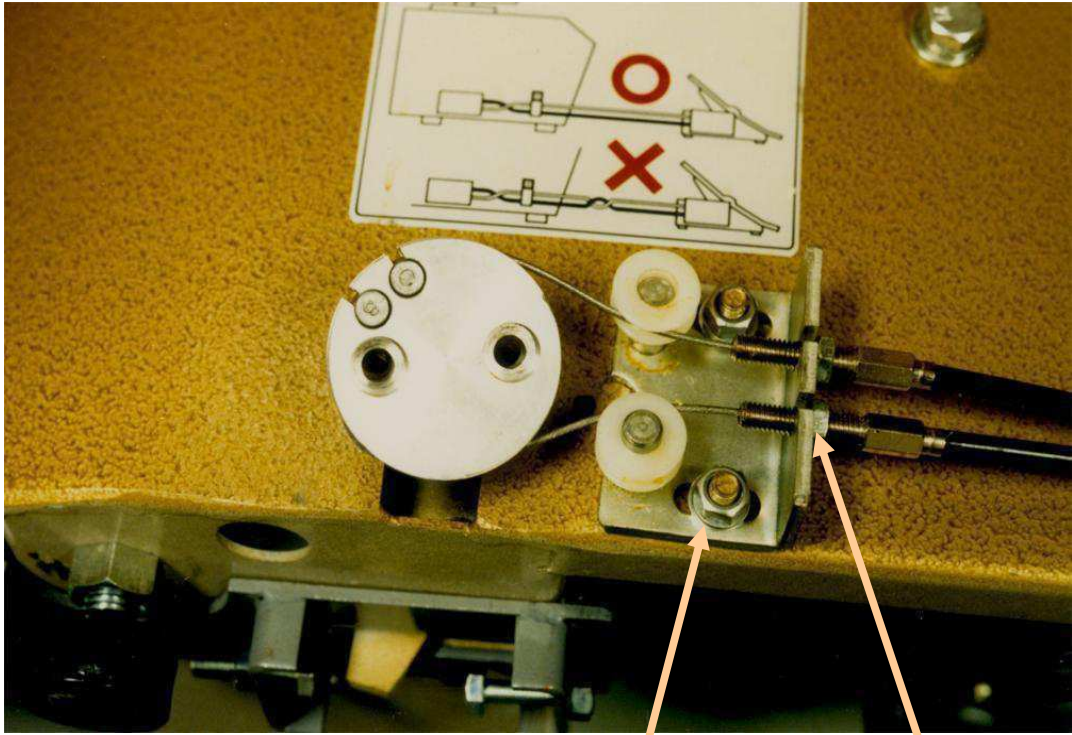


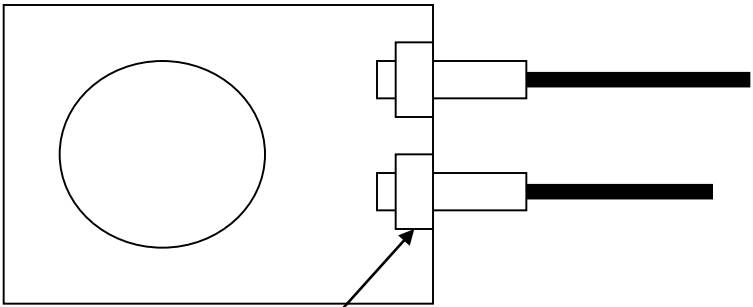
Figure A



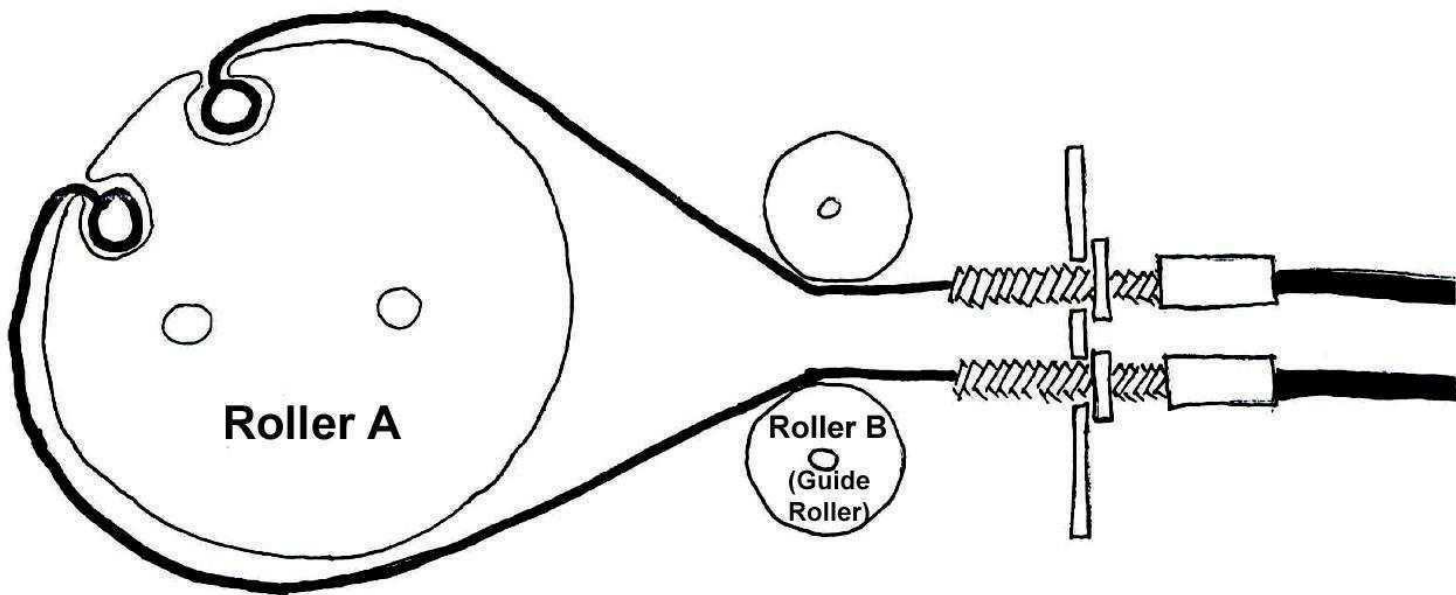
MOVE BRACKET GOING TOWARDS THE PEDAL CABLE.

LOCK NUT

Control Box from the Pedal

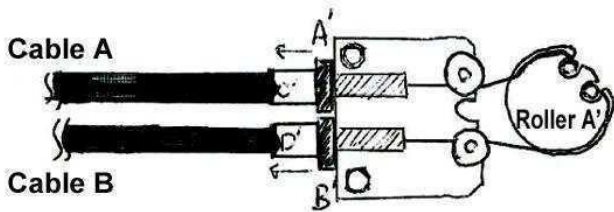
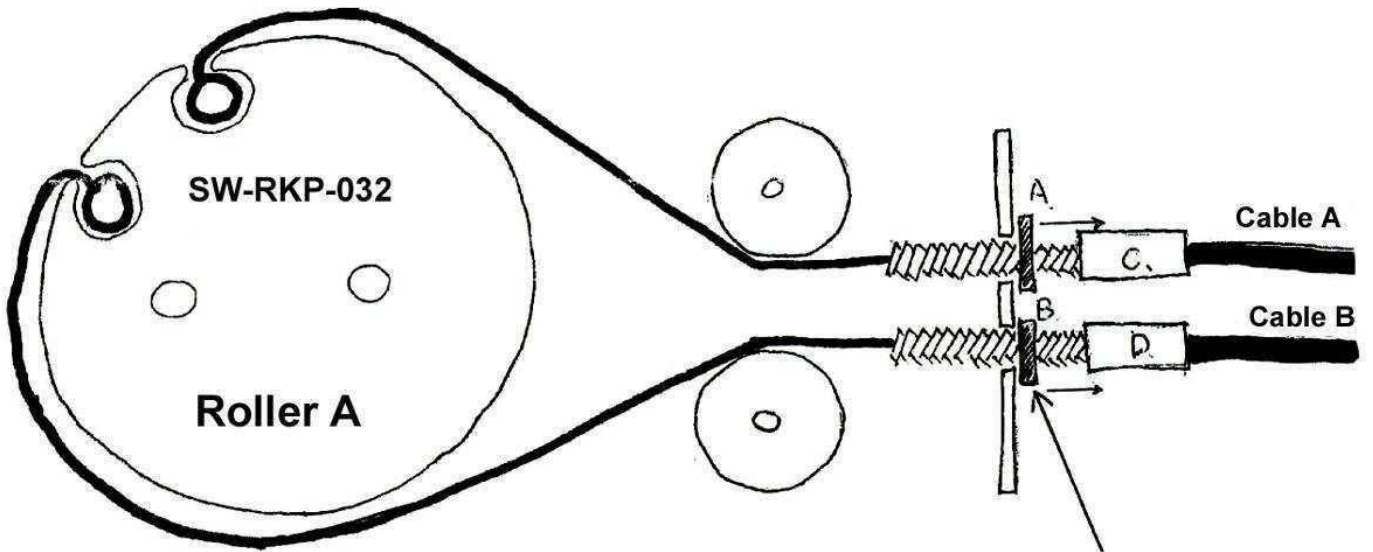


LOCK NUT

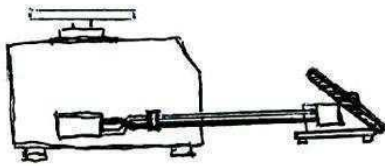


Dual Cable - ZYA 1209
Roller A - K3R00161
Roller B - K4R00601

← To Wheel



→ To Foot Pedal



* Adjust 2 lock nuts, [A] [B] close to Bolts [C] [D].

* Turn 2 Bolts [C] [D] clockwise to loosen both cables.

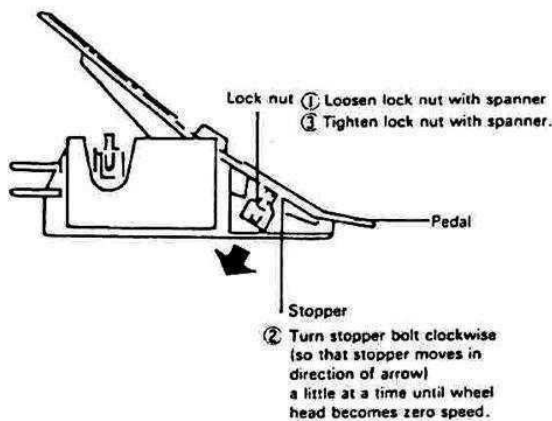
* This adjustment will extent length of both Cables to reach Rollers on each end.

* After connecting 2 Cables onto Rollers do Cable Tension Adjustment.

RK-10 Speed Adjustment - 2 Wire Remote Foot Pedal

④ ZERO SPEED ADJUSTMENT

If wheel head will not stop when pedal is in zero position:

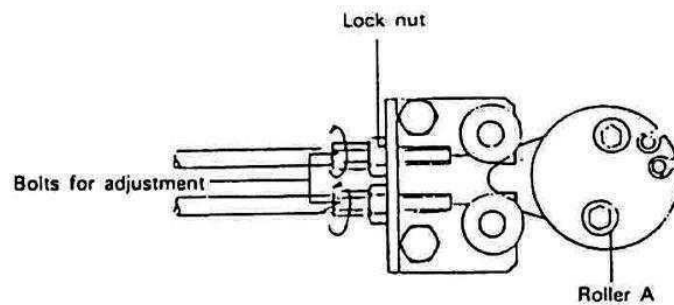


If wheel head continues to rotate after making above adjustment, wire tension adjustment is necessary.

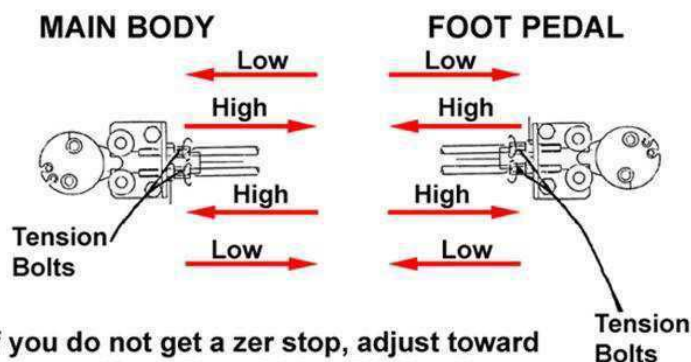
Follow instruction ⑤

⑤ WIRE TENSION ADJUSTMENT

Adjustment can be made by adjusting bolts located at side of pedal.



1. Loosen lock nuts.
2. Turn bolts on both wires 1/2 turn (must be same amount for both wires) in counter clockwise direction.
3. Tighten lock nuts.

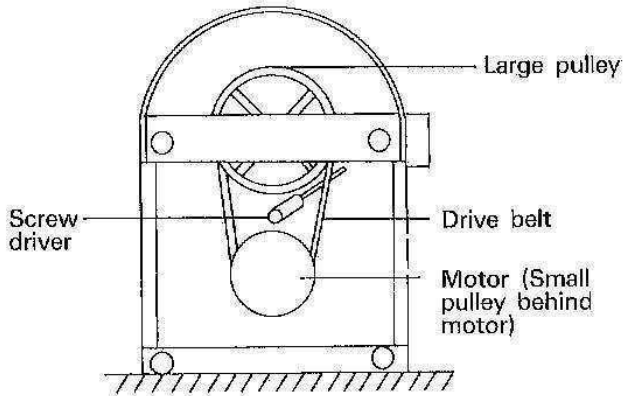


If you do not get a zero stop, adjust toward Low position. For a higher RPM, adjust to High position either at the foot control box or at the body control box. Loosen one bolt and tighten the other bolt to keep tension equal.

Manufactured by
SHIMPO INDUSTRIAL CO., LTD.
Kyoto, JAPAN

5 ADJUSTMENT

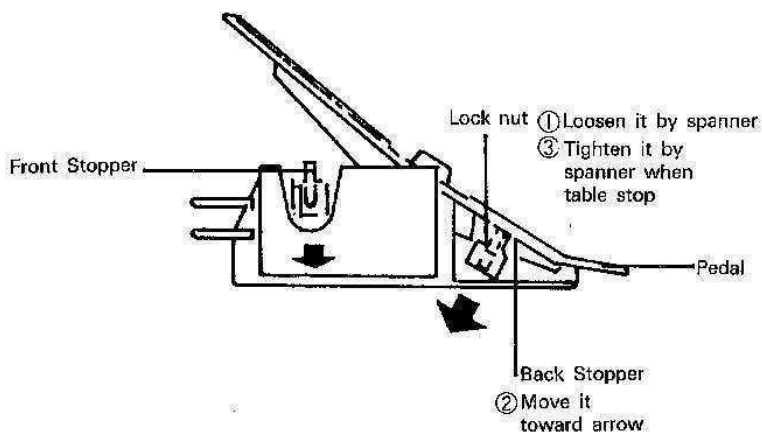
③ TO REPLACE DRIVE BELT



1. Turn switch to "FWD or REV"
2. Press pedal to highest speed position.
3. Turn switch to "Off" and unplug potter's wheel.
4. Place potter's wheel on its side (as shown in fig.).
5. Place screw driver between large pulley and drive belt.
Turn large pulley by hand to remove drive belt.
6. Put new drive belt around small pulley. Continue onto large pulley by turning large pulley by hand.

④ ADJUSTMENT TO GET 0 rpm.

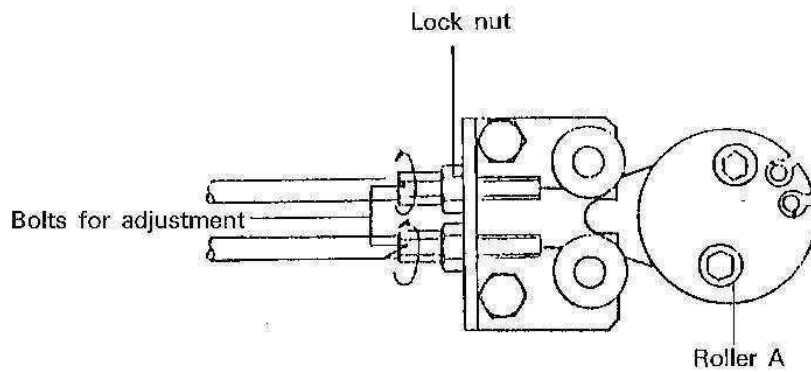
Adjust in following right order ①~③ in case of non-stop table revolution at zero position.



When table still working even above adjustment, follow

⑤ ADJUSTMENT OF WIRE TENSION

Adjustment may be made by adjusting bolts located at side of pedal and/or in control box.



1. Loosen lock nuts.
2. Turn bolts on both wires 1/2 turn in clockwise direction.
3. Tighten lock nuts.

Note :

To replace foot pedal wire, contact SHIMPO WEST or your local distributor for wire replacement set.

WHEELHEAD PROBLEMS

Problem: Turn on "forward" but wheel goes backward

Remedy: Send RK-10 Wiring Diagram.

Remedy: Wheel must come to complete stop before changing direction.
Especially on older wheels, turn by hand to new direction after complete stop. Then change direction switch.

Problem: Wheel will not stop at zero.

Remedy: Send Procedure for Adjusting Foot Pedal
Realign cone so it does not rest on drive ring when wheel should be stopped.

Problem: Goes forward then rotates backwards

Remedy: Fix screw in foot pedal.

Problem: Cannot remove wheelhead

Remedy: Remove screw (Spray with rust remover - oil is okay)

Remedy: Remove V belt & bolts. Lift out wheelhead with shaft

Problem: At low RPM can stop wheel by hand.

Remedy: Tighten V belt. Send Maintenance & Adjustment information from instruction manual.

Problem: Wheelhead wobbles

Remedy: Remove then reset on shaft. If noisy, check bearings

To Remove Bearings: Take off bearing holder snap ring, remove belt, tap shaft with hammer.

Speed

Not constant - hesitates, shimmy in wheel.

Adjust drive belt tension

Drop in Power

Adjust drive belt tension

No control over pedal speed (Silver or Gold)

Is stay soldered? (BRKE0251170 - Link B Holder)

Left side  Inside 

RK-10 TROUBLESHOOTING GUIDE

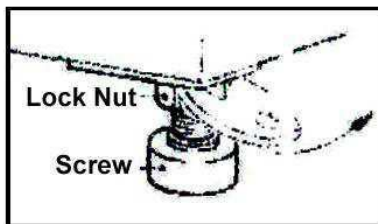
RK 10 NOISE TROUBLESHOOTING:

First: Noise can be caused by uneven flooring, please make sure the wheel is level. Try moving it around, setting it on a concrete floor, or adjusting the adjustable foot (loosen lock nut, turn screw until wheel is level, tighten lock nut).

If Noise persists: Check the V-belt (remove V-belt, turn on switch). If noise is gone, replace V-Belt.

If Noise persists: Check that the Non-Vibration Rubbers are in good condition (this part is a rubber piece with a bolt on either end that absorbs the vibration for the motor, they will be located where the motor plates attach to the wheel body). If the Non-Vibration Rubbers appear worn, replace.

These are minor issues to try first. If they don't help, the problem may be bearing or motor problems.



LEVELING POTTER'S WHEEL

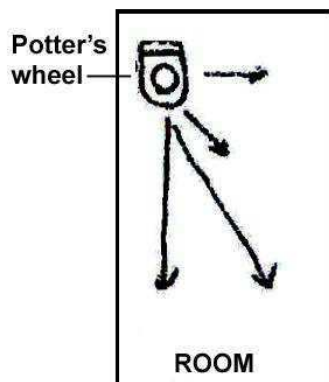
For best results, potter's wheel should be leveled.

- To Level:
1. Loosen lock nut on adjustable foot.
 2. Turn screw until potter's wheel is leveled.
 3. Tighten lock nut.

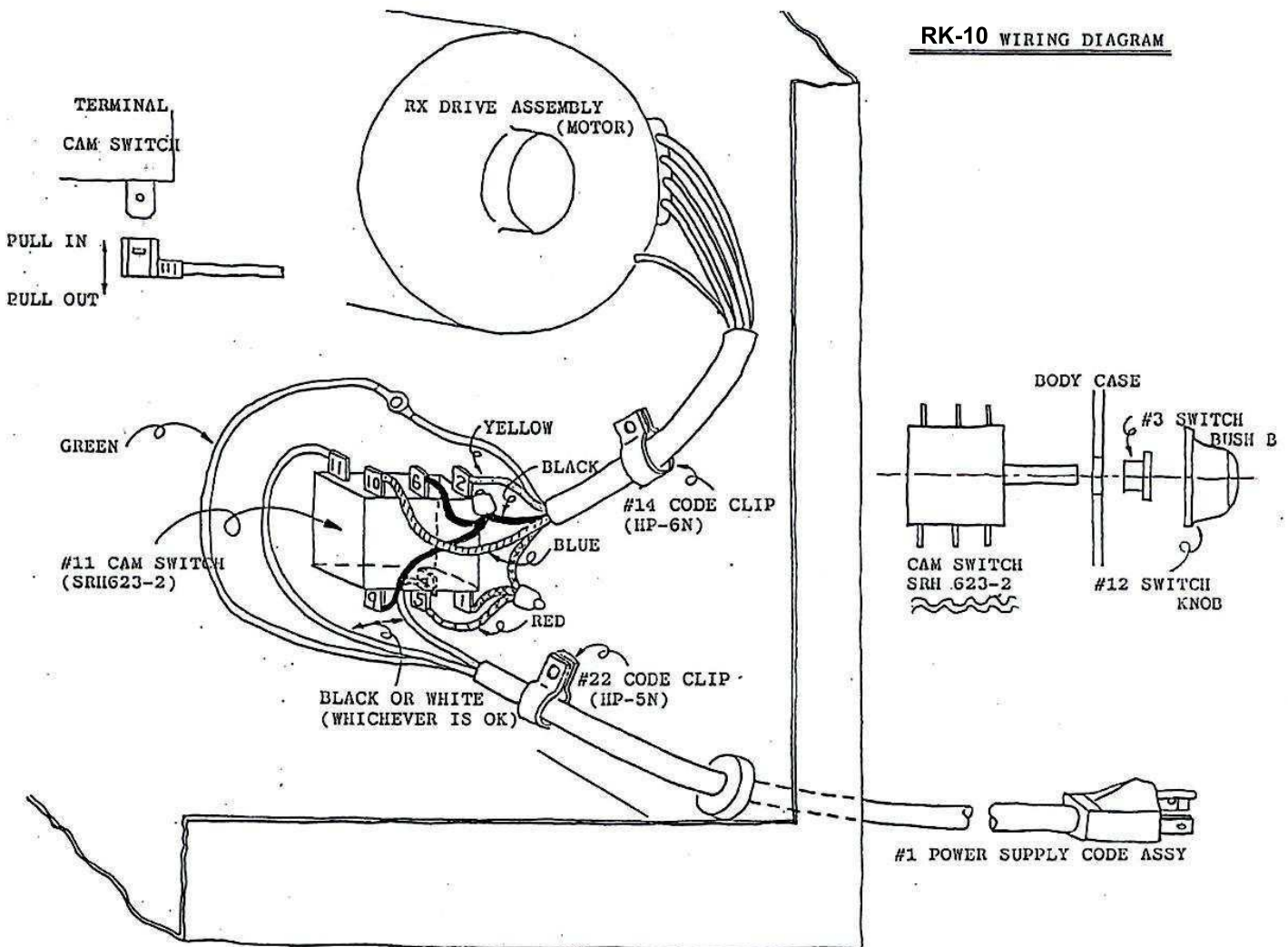
Check any loose bolts and fasteners.

Try to change the location of the wheel.

Sometimes noise can be corrected depending on location.



RK-10 WIRING DIAGRAM



Instructions for RK10 Wiring Diagram (drive assembly to cam switch)

The two black wires attach to terminals 6 & 9.

The two red wires attach to terminals 1 & 5.

The blue wire attaches to terminal 10.

The yellow wire attaches to terminal 2.

The white or black wires coming from the power supply attach to terminals 4 & 11.

Make sure to ground it by attaching the green wires from power assembly and motor.

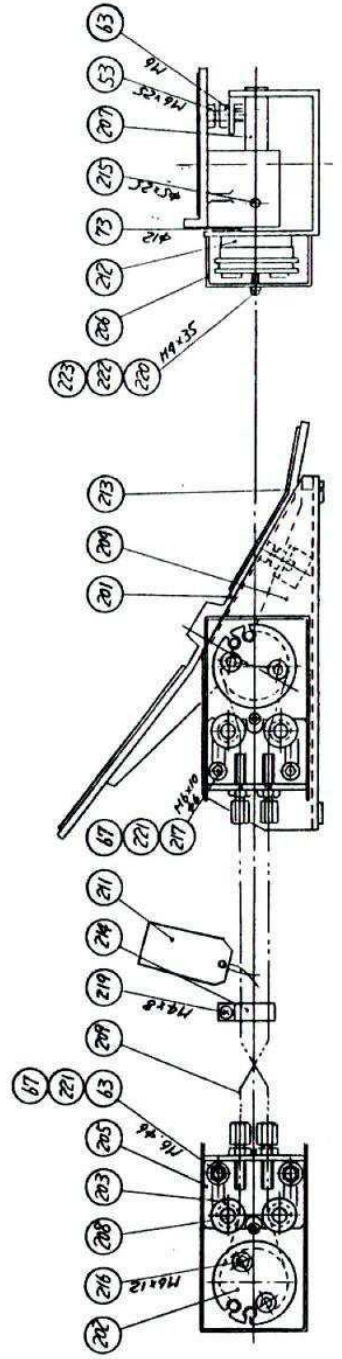
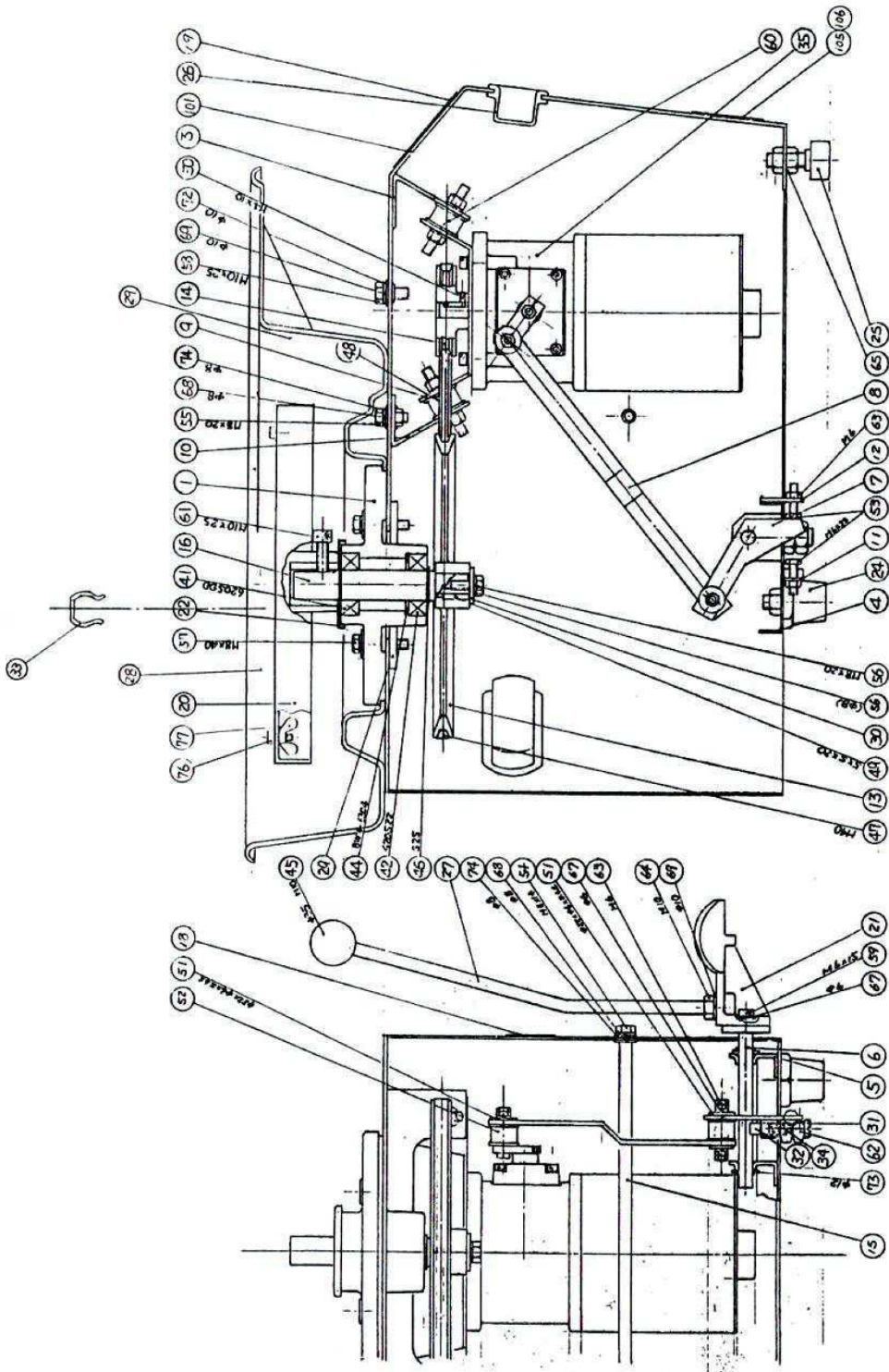
Terminal number locations are:

10, 6 & 2 are in a row on the top of the cam switch if the knob is on the right and the two screws are away from you.

11 is on the same side, in line with the two screws.

9, 5 & 1 are on the bottom closest to you with the switch sitting the same as above.

4 is on the same side, in line with those screws.



PARTS LIST FOR MODEL RK-10

1. B-HOLDER
3. RX SUPPORT PLATE R
4. BASE
5. BRACKET
6. PEDAL SHAFT
7. LINK A
8. LINK B
9. RX HOLDER
10. RX SUPPORT PLATE L
11. ADJUSTABLE HOLDER A
12. ADJUSTABLE HOLDER B
13. LARGE PULLEY
14. SMALL PULLEY
15. VIBRATION ABSORBING SHAFT
16. WHEEL HEAD SHAFT
21. PEDAL (BASIC & SUPER)
22. DUST COVER
24. FIXED FOOT
25. ADJUSTABLE FOOT
26. RUBBER HANDLE
27. LEVER (BASIC & SUPER)
28. 2-PIECE SPLASH PAN
31. ADJUSTABLE BOLT
33. SPLASH PAN CLIP
34. SPRING
35. RX TRACTION DRIVE W/MOTOR Specify ¼ HP for Silver & Basic ⅓ HP for Gold & Super
- 36-1 POWER SUPPLY CODE ASSEMBLY
- 36-3 SWITCH BUSH B
- 36-11 CAM SWITCH
- 36-12 SWITCH KNOB
41. BALL BEARING 6205DD
42. BALL BEARING 6205ZZ
45. GRIP KNOB (BASIC & SUPER)
47. V-BELT (M-40)
48. VIBRATION ABSORBING RUBBER (KA-30)
52. VIBRATION ABSORBING RUBBER (KA-25)
60. VIBRATION ABSORBING RUBBER (KA-30)
201. REMOTE CONTROL PEDAL
202. ROLLER A
203. ROLLER B
204. PEDAL BASE
205. TENSIONER
206. REMOTE CONTROL COVER
207. REMOTE CONTROL SHAFT
208. PIN
209. CABLE ASSEMBLY
313. WHEEL HEAD ASSEMBLY
314. BAT PIN WITH NUT
315. BAT PIN WITH NUT

Instructions on How to Convert Remote Foot Pedal to Fixed Pedal Control

(For RK-10 Shimpo Wheel Double Cable Only).

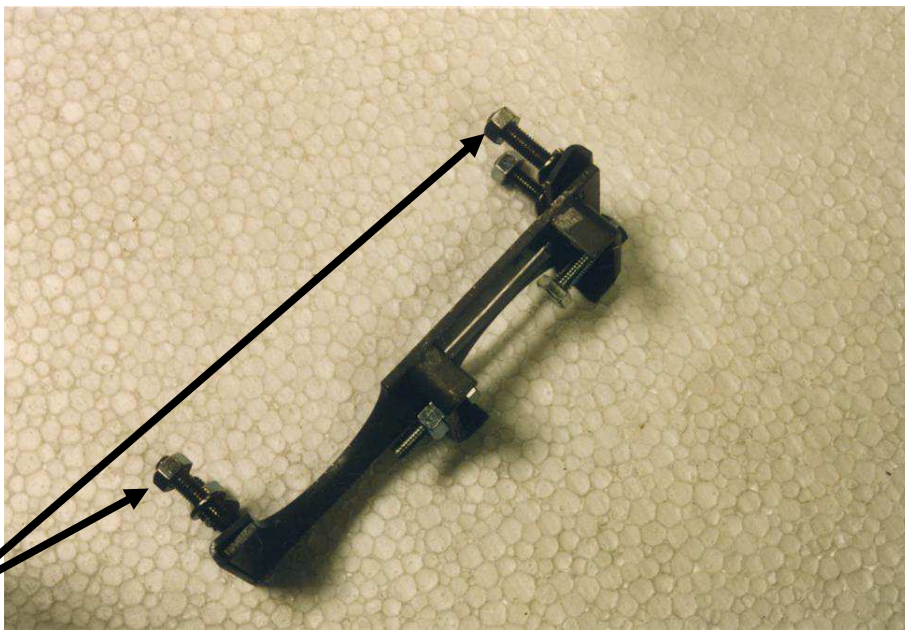
Parts Needed

KRKC020090 Pedal Assembly

SW-RKP-016 Stopper Assembly

2 RSSAA006015 Socket Bolt M6 X 15

2 RWSAA000006

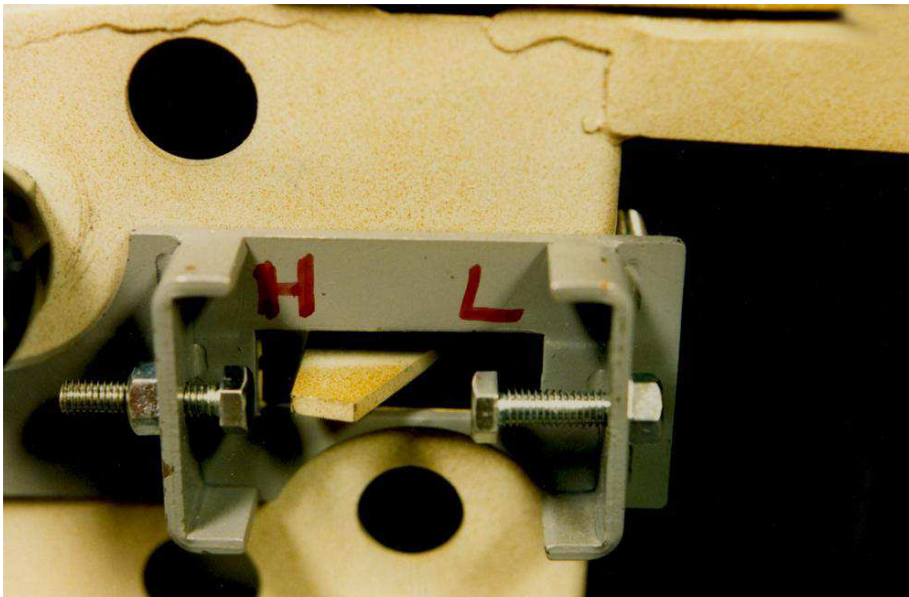


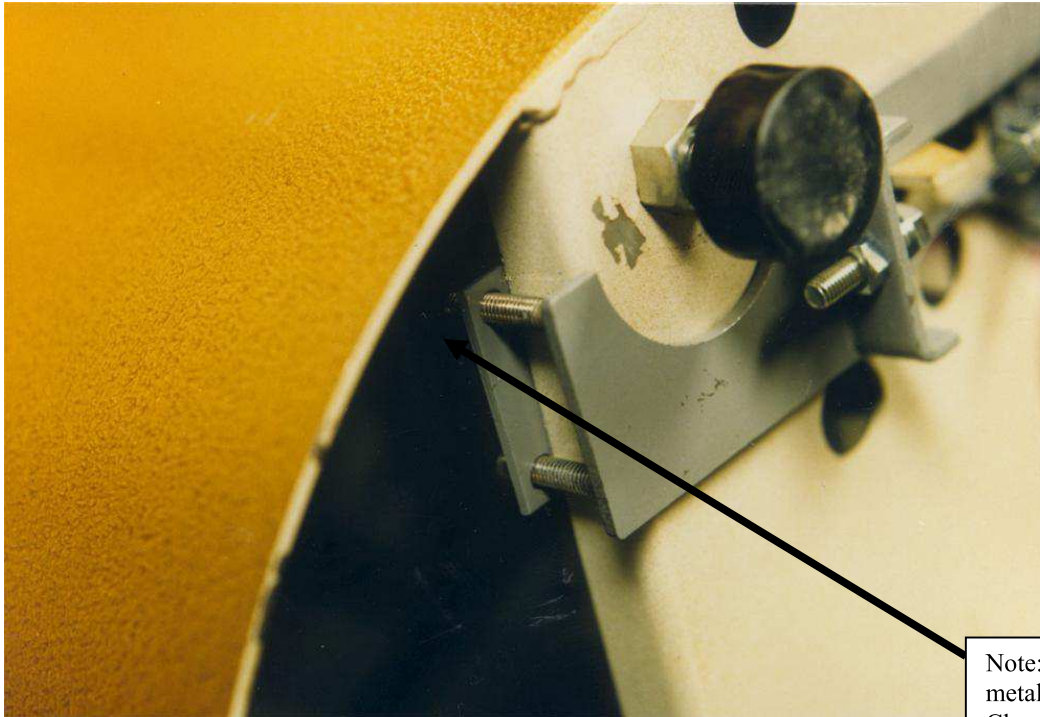
Lock nuts
and bolts

Stopper Assembly

- A. Attach Stopper Assembly
1. Place the Wheel on the Side
 2. Remove 4 Lock nuts and Washers

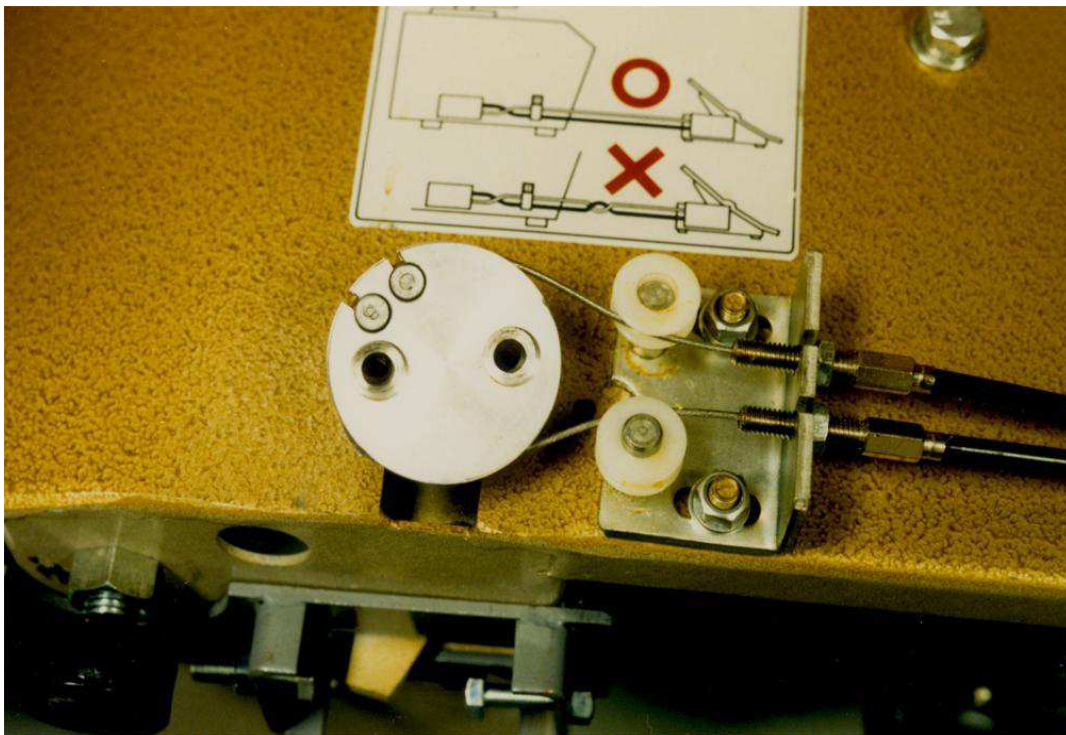
3. Attach Stopper bolt



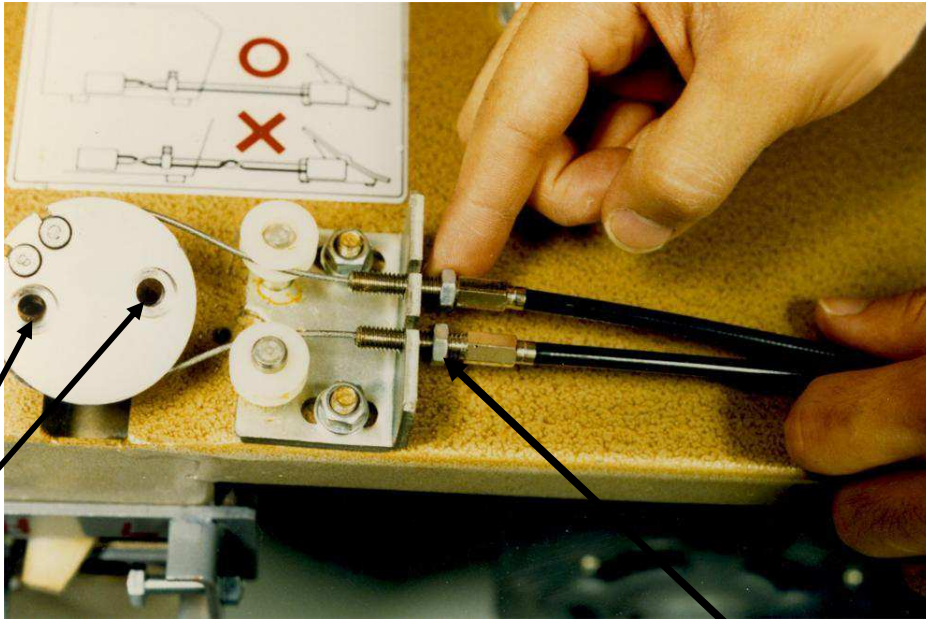


Note: Attach the piece of metal as indicated like a Clamp.

B. Remove Remote Control and Attach Fixed Pedal



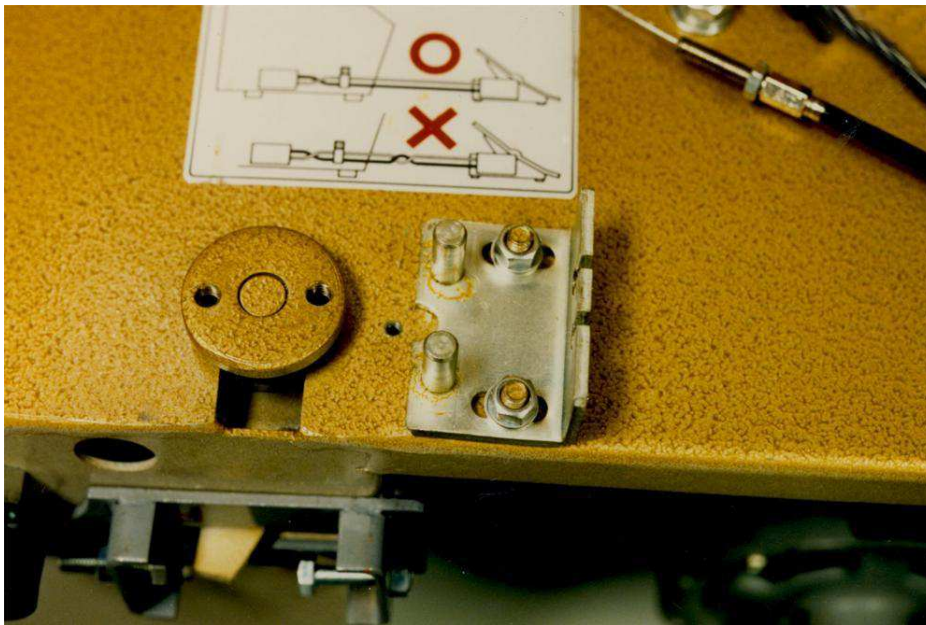
1. Remove Control cover on side of Wheel head.



Socket Bolts

Lock nut and Tension Bolt

2. Remove screws from fixed foot pedal



3. Loosen 2 socket bolts on roller and remove roller.
4. Loosen lock nuts on cable and remove 2 cables.
5. Remove 2 guide rollers.



6. Attach lever pedal and tighten 2 socket bolts on lever pedal.

RK-10 NON-VIBRATION RUBBER

Number Parts Number DESCRIPTION

- A1 RZEAB301860 NON-VIB RUBBER KA-30-60
- B1 RZEAB251860 NON-VIB RUBBER KA-25-60
- C1 RZEAB301845 NON-VIB RUBBER KA-30-45

