

RK 10 TROUBLESHOOTING

RK 10 NOISE TROUBLESHOOTING:

First: Noise can be caused by uneven flooring, please make sure the wheel is level. Try moving it around, setting it on a concrete floor, or adjusting the adjustable foot (loosen lock nut, turn screw until wheel is level, tighten lock nut).

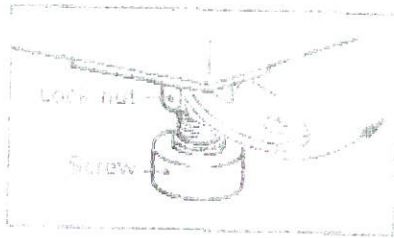
If Noise persists: Check the V-belt (remove V-belt, turn on switch). If noise is gone, replace V-Belt.

If Noise persists: Check that the Non-Vibration Rubbers are in good condition (this part is a rubber piece with a bolt on either end that absorbs the vibration for the motor, they will be located where the motor plates attach to the wheel body). If the Non-Vibration Rubbers appear worn, replace.

These are minor issues to try first. If they don't help, the problem may be bearing or motor problems.

Re : Noise of RK-10 SUPER

Try this.



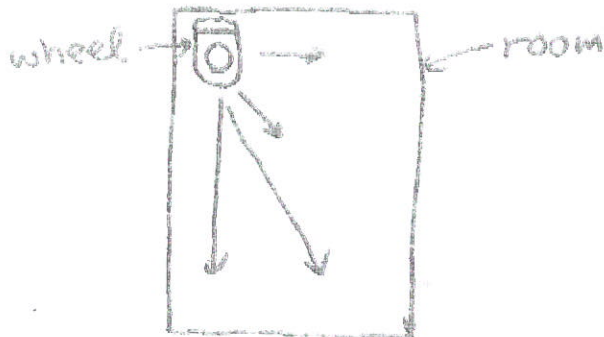
2. LEVEL POTTER'S WHEEL

For best results, potter's wheel should be leveled.

- To level:
- Loosen lock nut on adjustable foot.
 - Turn screw until potter's wheel is leveled.
 - Tighten lock nut

check any loose of holes and fasteners.

Try to change the location of a wheel.
Sometimes noise change depending on location.



THX.

WHEELHEAD PROBLEMS

Problem: Turn on "forward" but wheel goes backward

Remedy: Send RK-10 Wiring Diagram.

Remedy: Wheel must come to complete stop before changing direction.
Especially on older wheels, turn by hand to new direction after complete stop. Then change direction switch.

Problem: Wheel will not stop at zero.

Remedy: Send Procedure for Adjusting Foot Pedal
Realign cone so it does not rest on drive ring when wheel should be stopped.

Problem: Goes forward then rotates backwards

Remedy: Fix screw in foot pedal.

Problem: Cannot remove wheelhead

Remedy: Remove screw (Spray with rust remover - oil is okay)

Remedy: Remove V belt & bolts. Lift out wheelhead with shaft

Problem: At low RPM can stop wheel by hand.

Remedy: Tighten V belt. Send Maintenance & Adjustment information from instruction manual.

Problem: Wheelhead wobbles

Remedy: Remove then reset on shaft. If noisy, check bearings

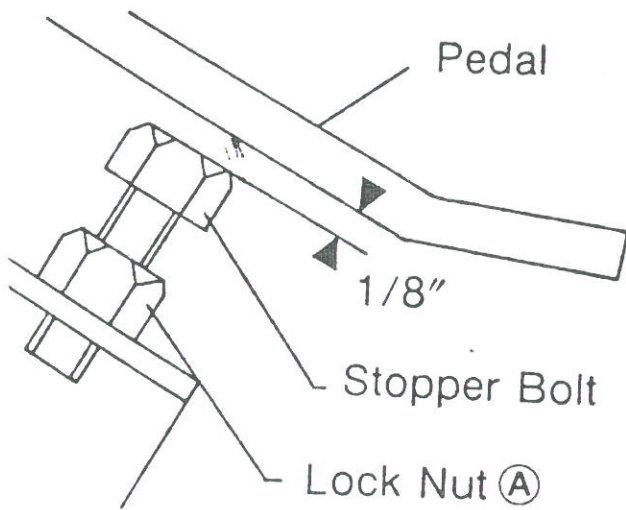
DECREASE SPEED
OR STOP

“High-Speed” position. *RKID G&S*
Do not attempt to turn wheel head by
hand when pedal is in “Zero-Speed”
position.

3 MAINTENANCE & ADJUSTMENT

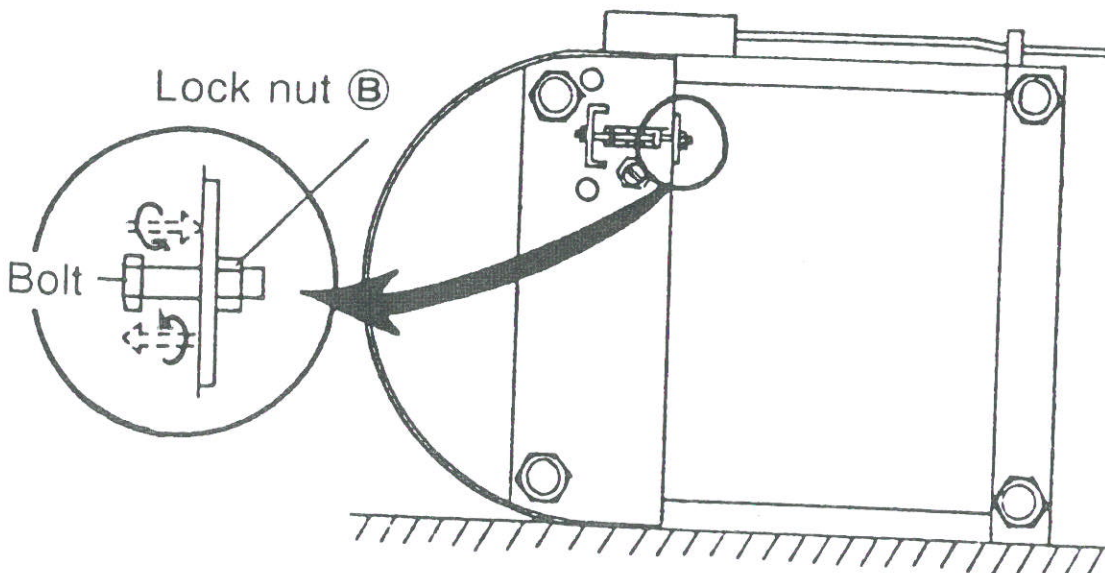
Turn switch to “OFF” position and unplug potter's wheel before doing maintenance or adjustment.

① ZERO SPEED ADJUSTMENT *pedal 3/5 lock*



If wheel head will not stop when pedal is in zero position :

1. Loosen lock nut (A) located under pedal.
2. Turn stopper bolt several times in clockwise direction.
3. Place potter's wheel on side (as shown in fig.).
4. Loosen lock nut (B) located on bottom of unit.





AMERICA CORPORATION

3500 DEVON AVENUE, LINCOLNWOOD, IL 60659 • 708/679-6765 • FAX: 708/679-5033

Problem: Pedal does not always work -must turn by hand

Solution: Check for loose bolts and nuts

Screws to Hold Pedal on RK-10

2 RWSAA000006 Spring Washer

2 RSSAA006015 Socket Screw Head Cap (M6x15)

To Remove Bearings: Take off bearing holder snap ring, tap shaft with hammer. *Remove Bolt*

Speed

Not constant - hesitates, shimmy in wheel.

Adjust drive belt tension

Drop in Power

Adjust drive belt tension

No control over pedal speed (Silver or Gold)

Is stay soldered? (BRKE0251170 - Link B Holder)

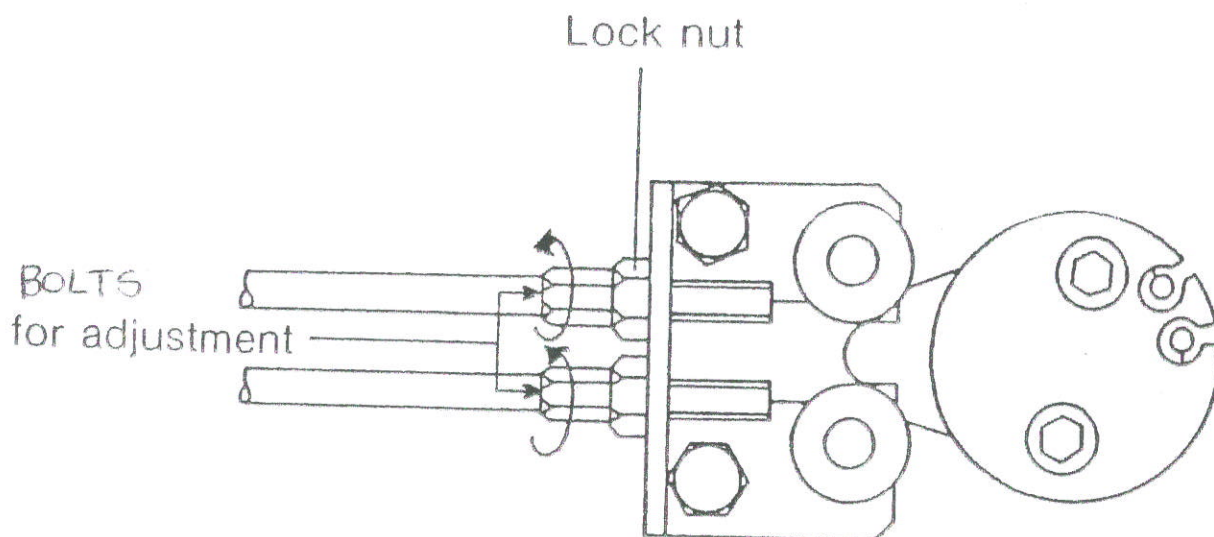
Left side  Inside )

② CABLE TENSION ADJUSTMENT

Do not adjust cable tension unless it is absolutely necessary, i.e.

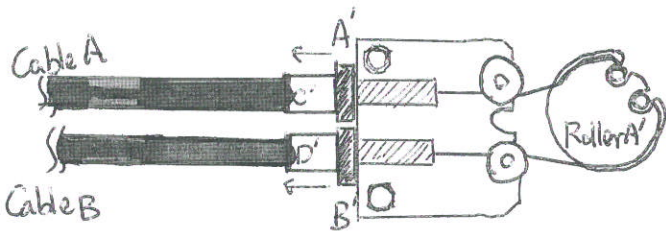
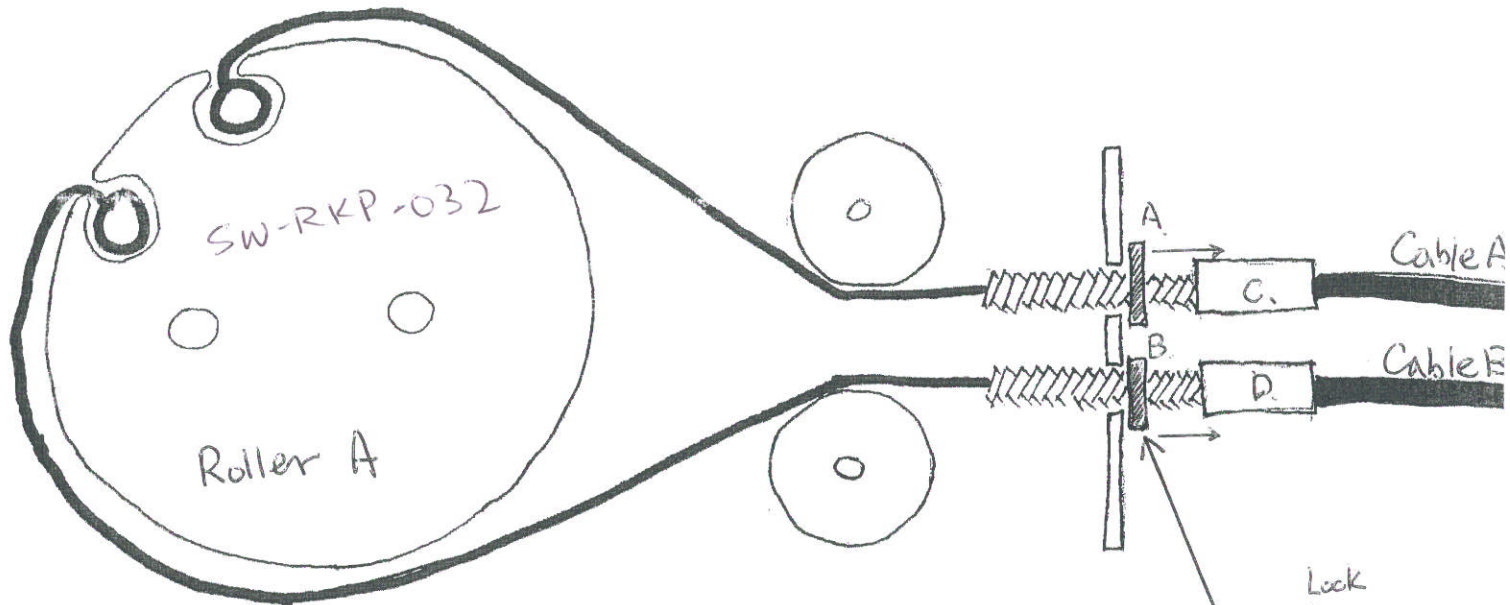
1. Wheel head does not stop after zero speed adjustment.
2. After cable replacement.

Adjustment can be made by adjusting bolts located at side of pedal.

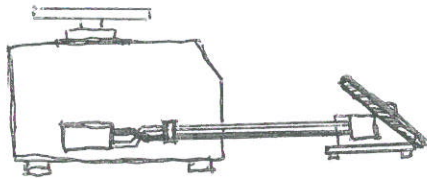


1. Loosen lock nuts.
2. Turn bolts on both cables 1/2 turn (must be same amount for both cables) in counter clockwise direction.
3. Tighten lock nuts.

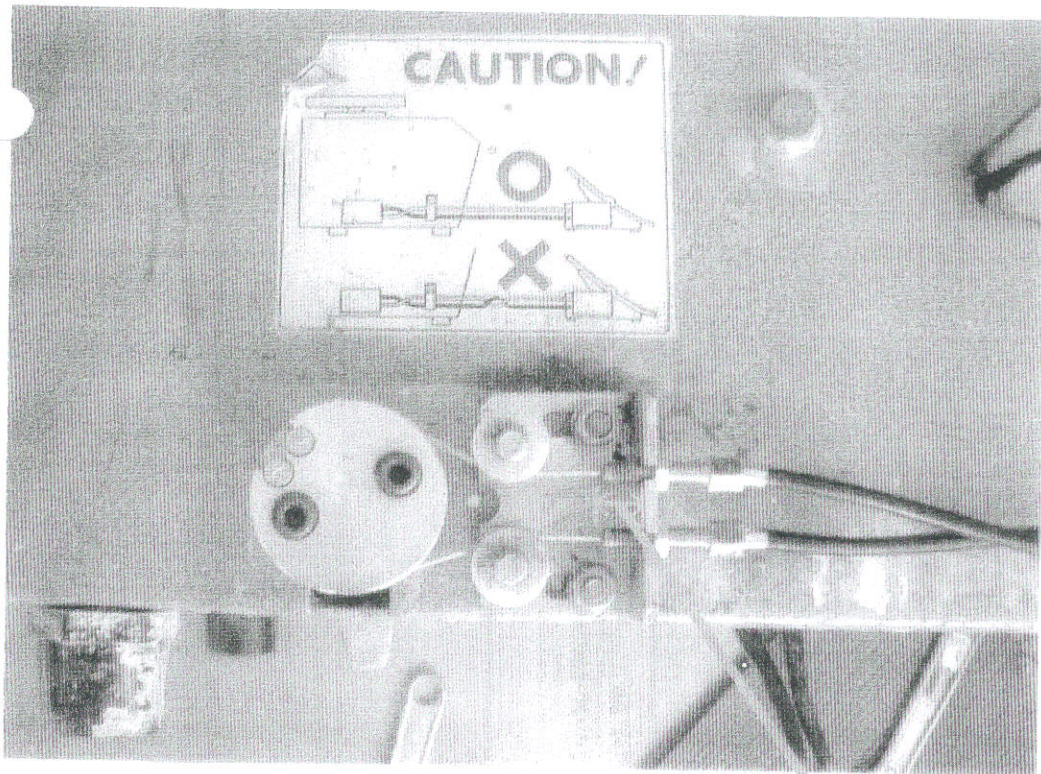
← To Wheel.



→ To Foot Pedal.

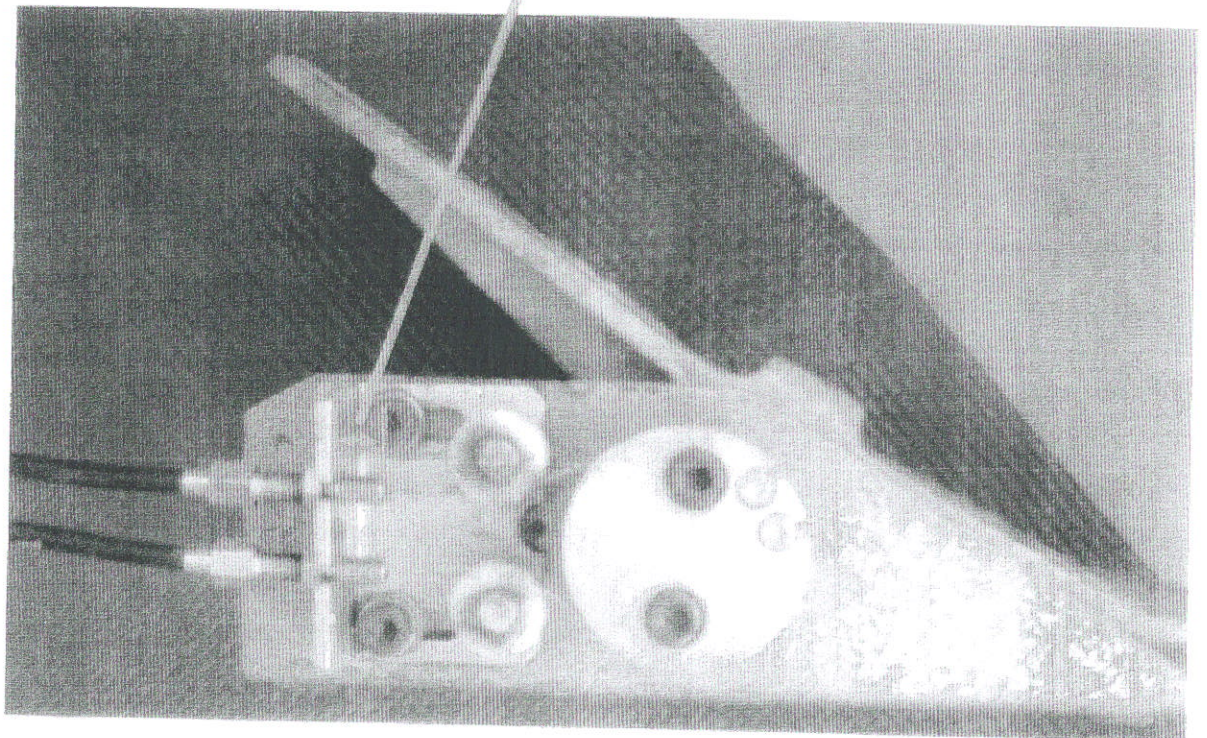


- Lock
- * Adjust 2 Nuts, "A" & "B" close to Bolts "C" & "D"
 - * Turn 2 Bolts "C" & "D" Clockwise to Loose Both Cables.
 - * This Adjustment will extend the length of Both Cables to Reach Rollers on Each End.
 - * After connect 2 Cables onto Roller Do Cable Tension Adjustment

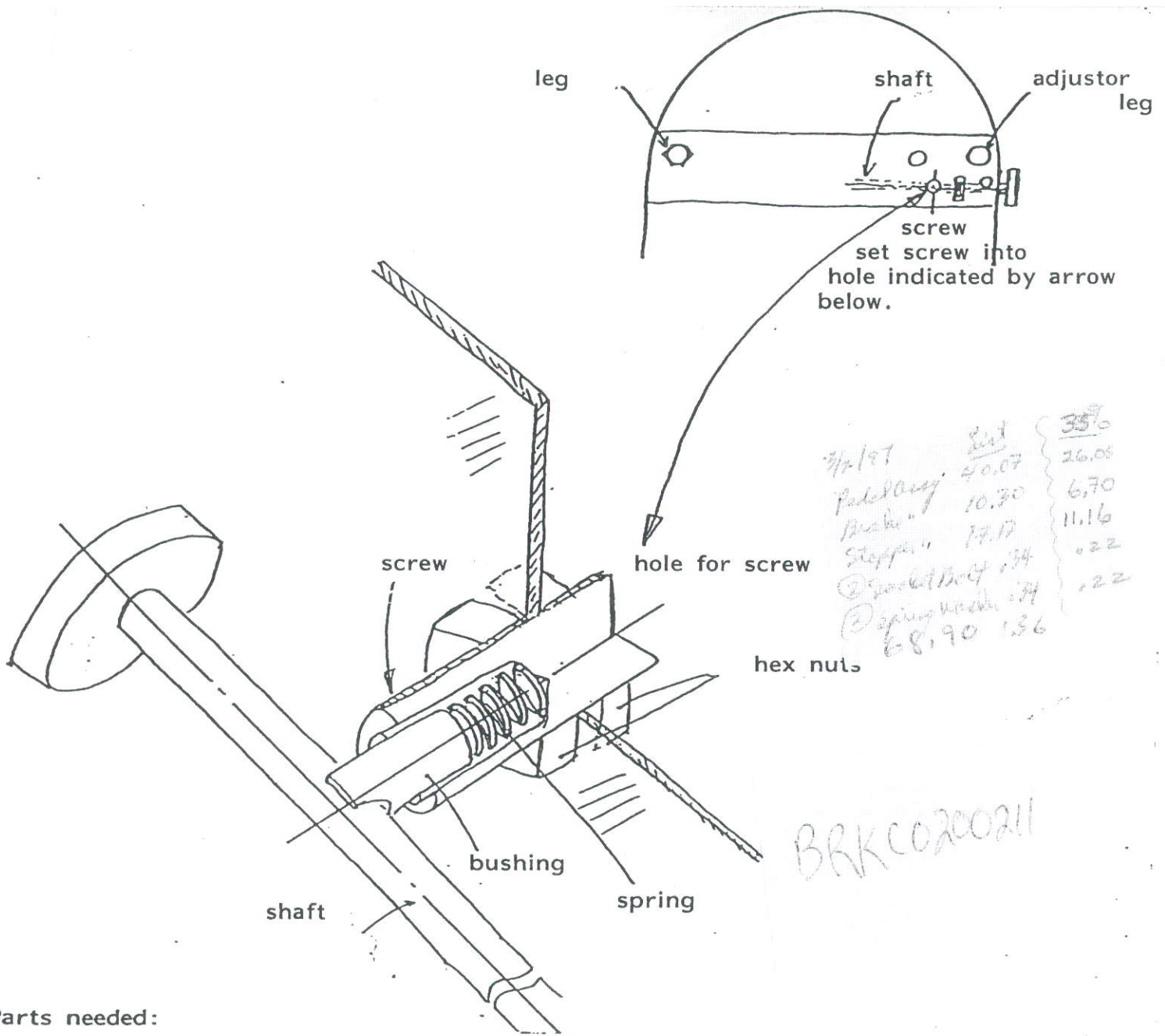


Side of wheel
w new cables
in place

Distance projecting, 5/16"



foot pedal



Parts needed:

- KRKC0200090 Pedal Assembly
- KRKE0200220 Brake Assembly
- SW-RKP-016 Stopper Assembly

- 2 RSSAA006015 Socket Bolt M6 x 15
- 2 RSWAA000006 Spring Washer M6

INSTRUCTIONS: TO CONVERT REMOTE CONTROL TO FIXED PEDAL CONTROL

(For RK-10 Shimpo Wheel Double Cable Only)

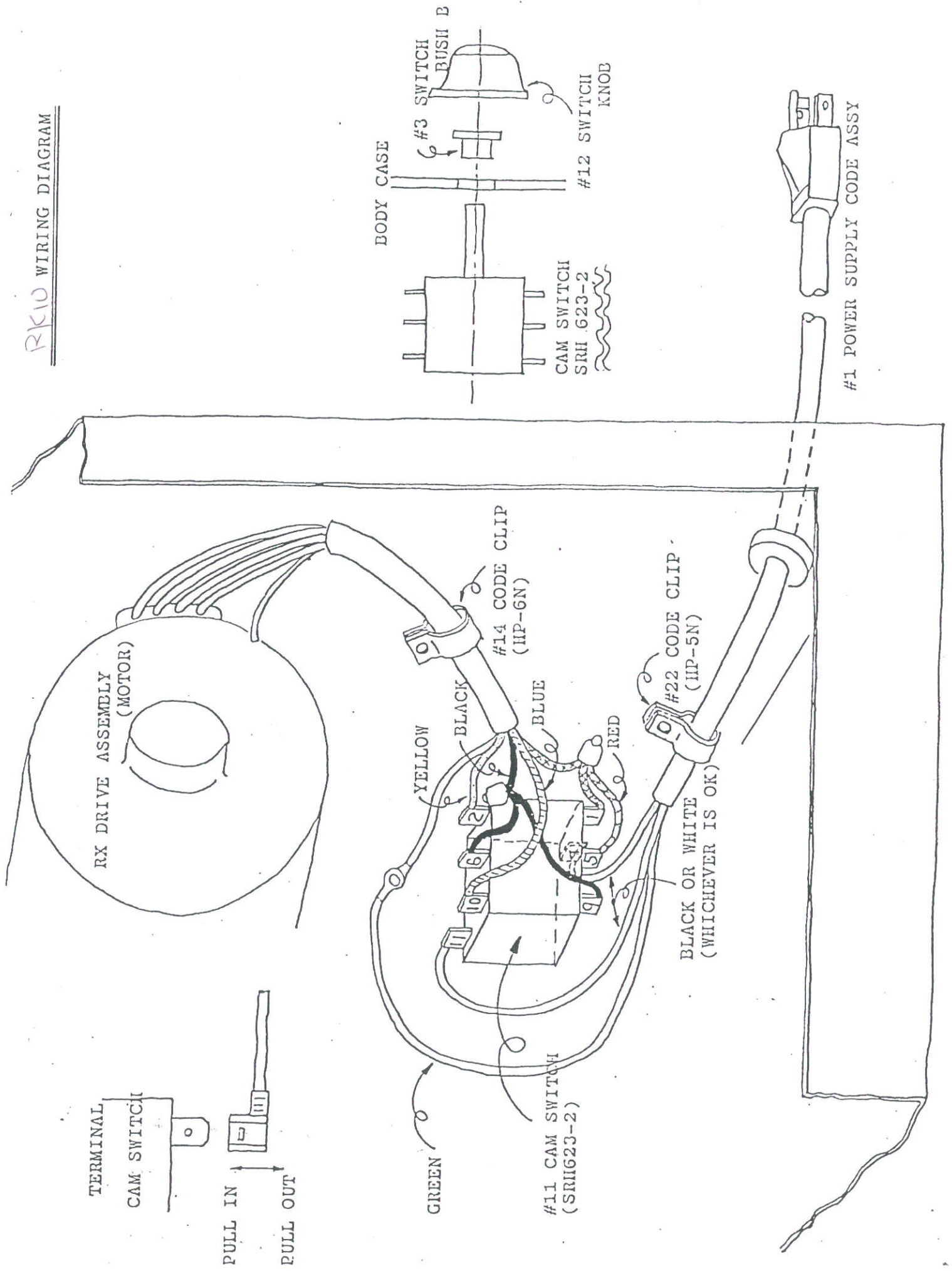
A. Attach Stopper Assembly

1. Place wheel on side.
2. Remove 4 lock nuts and washers
3. Attach stopper bolt plate and tighten lock nuts

B. Remove Remote Control and Attach Fixed Pedal

1. Remove control cover on side of wheel head.
2. Remove screw from fixed cables.
3. Loosen 2 socket bolts on roller and remove roller
4. Loosen lock nuts on cable and remove the 2 cables.
5. Remove 2 guide rollers
6. Attach lever pedal and tighten 2 socket bolts on lever pedal.

RK10 WIRING DIAGRAM



TERMINAL
CAM SWITCH

PULL IN
PULL OUT

RX DRIVE ASSEMBLY
(MOTOR)

YELLOW

BLACK

BLUE

RED

#11 CAM SWITCH
(SRH623-2)

#14 CODE CLIP
(HP-6N)

#22 CODE CLIP
(HP-5N)

BLACK OR WHITE
(WHICHEVER IS OK)

BODY CASE

#3 SWITCH
BUSH B

#12 SWITCH
KNOB

CAM SWITCH
SRH 623-2

#1 POWER SUPPLY CODE ASSY

Instructions for RK10 Wiring Diagram (drive assembly to cam switch)

The two black wires attach to terminals 6 & 9.

The two red wires attach to terminals 1 & 5.

The blue wire attaches to terminal 10.

The yellow wire attaches to terminal 2.

The white or black wires coming from the power supply attach to terminals 4 & 11.

Make sure to ground it by attaching the green wires from power assembly and motor.

Terminal number locations are:

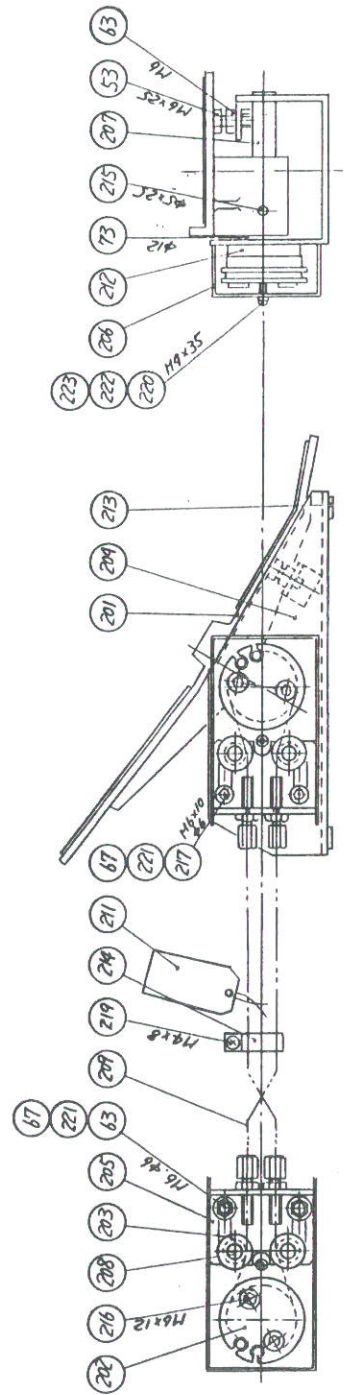
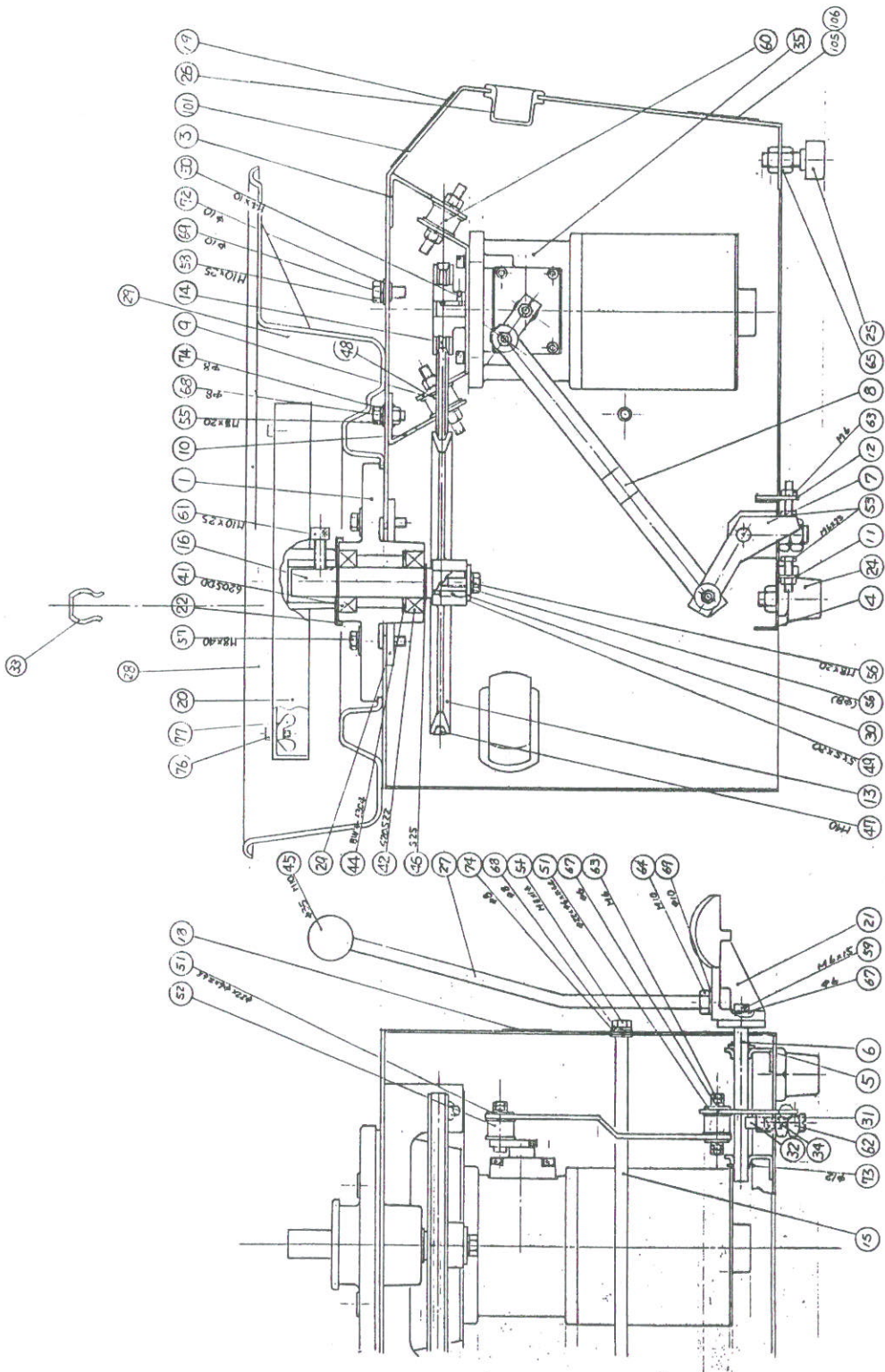
10, 6 & 2 are in a row on the top of the cam switch if the knob is on the right and the two screws are away from you.

11 is on the same side, in line with the two screws.

9, 5 & 1 are on the bottom closest to you with the switch sitting the same as above.

4 is on the same side, in line with those screws.

RK10
OLDER
MODEL



PARTS LIST FOR MODEL RK-10

1. B-HOLDER
3. RX SUPPORT PLATE R
4. BASE
5. BRACKET
6. PEDAL SHAFT
7. LINK A
8. LINK B
9. RX HOLDER
10. RX SUPPORT PLATE L
11. ADJUSTABLE HOLDER A
12. ADJUSTABLE HOLDER B
13. LARGE PULLEY
14. SMALL PULLEY
15. VIBRATION ABSORBING SHAFT
16. WHEEL HEAD SHAFT
21. PEDAL (BASIC & SUPER)
22. DUST COVER
24. FIXED FOOT
25. ADJUSTABLE FOOT
26. RUBBER HANDLE
27. LEVER (BASIC & SUPER)
28. 2-PIECE SPLASH PAN
31. ADJUSTABLE BOLT
33. SPLASH PAN CLIP
34. SPRING
35. RX TRACTION DRIVE W/MOTOR Specify ¼ HP for Silver & Basic ⅓ HP for Gold & Super
- 36-1 POWER SUPPLY CODE ASSEMBLY
- 36-3 SWITCH BUSH B
- 36-11 CAM SWITCH
- 36-12 SWITCH KNOB
41. BALL BEARING 6205DD
42. BALL BEARING 6205ZZ
45. GRIP KNOB (BASIC & SUPER)
47. V-BELT (M-40)
48. VIBRATION ABSORBING RUBBER (KA-30)
52. VIBRATION ABSORBING RUBBER (KA-25)
60. VIBRATION ABSORBING RUBBER (KA-30)
201. REMOTE CONTROL PEDAL
202. ROLLER A
203. ROLLER B
204. PEDAL BASE
205. TENSIONER
206. REMOTE CONTROL COVER
207. REMOTE CONTROL SHAFT
208. PIN
209. CABLE ASSEMBLY
313. WHEEL HEAD ASSEMBLY
314. BAT PIN WITH NUT
315. BAT PIN WITH NUT